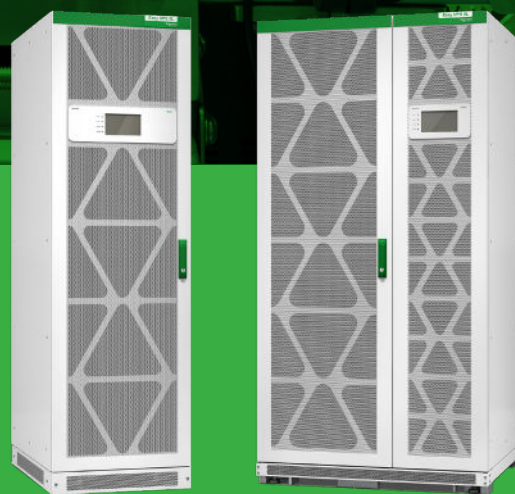




# Easy UPS 3L

Business continuity made easy  
with optimized investment

250-600 kVA  
400 V



[se.com/ups](http://se.com/ups)

Life Is On

**Schneider**  
Electric

# Business continuity made easy with optimized investment

The Schneider Electric Easy UPS 3L, part of the Easy UPS 3-phase range, is an easy-to-configure, easy-to-use, and easy-to-service 250-600 kVA (400 V) 3-phase UPS that delivers high availability and predictability to medium and large commercial buildings and light industrial applications.

Its fault-tolerant design streamlines installation and service, its compact footprint saves valuable real estate, and its up to 96% efficiency brings predictability to your utility costs. With its exceptional combination of competitive specifications and highly available parallel and redundant designs, the EcoStruxure™ connected Easy UPS 3L is the easy choice for business continuity at your manufacturing site or in your electrical room. Start-up service is included to optimize your system's performance, quality, and safety.

## Typical applications

- Commercial buildings
- Manufacturing facilities
- Telecommunication
- Healthcare
- Transportation



### Easy

Simplify every step of the deployment process with the UPS that is easy to select, easy to configure, easy to start up, and easy to use and service.



### Competitive specifications

Enjoy high efficiency and protection against harsh environments with robust electrical specifications and ruggedizing features.



### Optimized investment

Tailor the UPS to your site's needs to reduce your capital expenditures and improve the predictability of your utility costs.



### Robust and flexible design

Fault-tolerance, coupled with your choice of redundant configurations, keeps your site resilient.



### Compact footprint

High density makes more room for your revenue-generating equipment.



### EcoStruxure connected

Anytime, anywhere monitoring and service support via smartphone.

# Robust, versatile, and optimized investment

## Robust design and versatile architecture

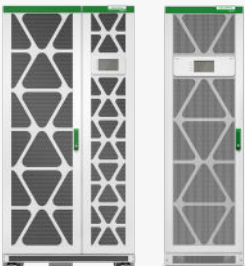
- Fault-tolerant design enhances availability
- Wide battery voltage window for easy compatibility with third-party battery solutions
- Easily adapts to your site requirements:
  - Parallel up to 5 UPSs for capacity or 5+1 UPSs for redundancy
  - Includes support for 4+4 redundant configurations
- The included fortifying features protect your UPS in data centers, manufacturing, industrial, or commercial buildings:
  - Embedded dust filter
  - IP20 protection
  - Conformal coating
  - Wide input voltage range
  - Rodent protection
  - Upgrade your UPS to protect against condensation and comply with NFS61940 by installing the optional IP31 kit

## Compact design and optimized start-up investment

- Compact and lightweight form factor
- Up to 96% efficiency in double conversion mode
- 1+1 redundant UPSs can share a common battery bank, reducing battery costs
- Only pay for the options you need with upgrade kits to enhance the resilience of the UPS

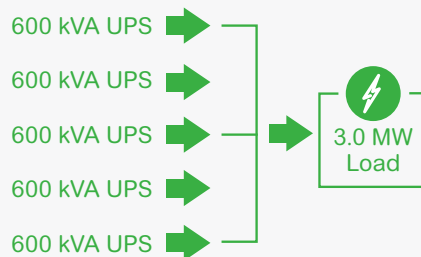
Achieve high availability and resiliency with fault tolerant design and flexible redundancy schemes that support your ideal system architecture

### Fault-tolerant design



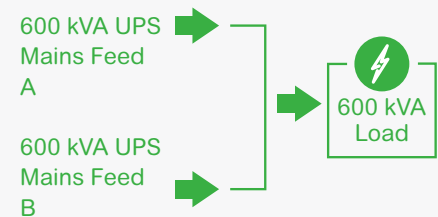
The design is a fault-tolerant architecture. In case a power block becomes inoperable, the load will continue to be supported by the remaining power blocks, provided that the load is below the capacity of the functional power blocks in the system.

### Increased capacity with parallel installation



You can install up to 5 UPSs in parallel for capacity.

### Higher resiliency with N+N isolated bus installation



You can increase availability by installing two isolated busses (UPSs) to receive power from two independent power sources. The UPSs are synchronized automatically, making installation and set-up easy and resilient.

# Easy to install, operate, and service

## Easy to install and start up

- Streamlined installation with standard top cable entry
- Smart Test mode optimizes site acceptance testing costs, saves time, and ensures high load protection by validating the UPS performance before you connect your load, without requiring a load bank
- Aesthetic design blends well into your installation environment
- Easy on-site start-up with Schneider Electric Services Representatives

## Easy to configure and operate

- Easy to configure with the user-friendly 7-inch touchscreen display interface
- With the included Network Management Card, you can:
  - Monitor UPS status remotely through a web interface
  - Monitor and manage the UPS status and performance through EcoStruxure IT's cloud-based and on-premise software suites, or through SNMP integration to the Network Management System of your choice, bringing you peace of mind
  - Manage buildings through the BACnet protocol for integration with Building Management Systems (BMSs)

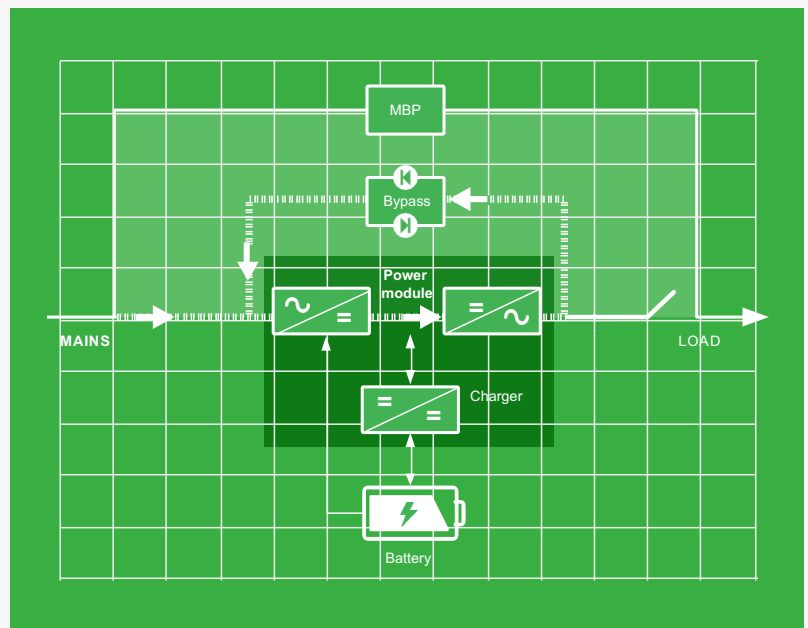
## Easy to maintain and service

- Quickly and easily replace the dust filter, conveniently located behind the front door
- Schneider Electric service team makes service easy and improves uptime with proper maintenance of your UPS and batteries

## Speed up deployment time and reduce start-up costs by using the Smart Test mode before connecting your critical building or facility load

Smart Test mode enables the service engineer to test the UPS with full capacity current flow through important components and converters without using a large system input current, and without needing a load bank connected to the system or other system modifications.

- Simple, easy, and a safe method to test the UPS at full power
- Can be conducted after service, repair, upgrade, or commissioning of UPS installation to verify system is properly installed
- Reduce risk to load and improve product quality
- Significant cost, time, and power savings!



# Options and accessories

Easy UPS 3L is available with a full range of options and accessories, making it easy to integrate into different environments.

## Options



Classic battery cabinets



Empty auxiliary cabinet



Battery breaker box



Maintenance bypass panel

## Accessories

- Parallel communication kit
- Load Bus Synchronization (LBS) Kit
- Cold start kit
- Battery breaker kit
- Bottom cable entry cabinet
- IP31 kit



# Easy Monitoring, Management, and Services

EcoStruxure IT enables resilient, secure, and sustainable data centers and IT environments

Schneider Electric's comprehensive Data Center Infrastructure Management (DCIM) solution, EcoStruxure IT, ensures business continuity by enabling secure monitoring, management, insights, planning, and modeling — whether from a single IT rack to hyper-scale IT — on-premises, in the cloud, and at the edge.

With the included Network Management Card, you can deploy EcoStruxure IT software and services to enhance monitoring and management of your Easy UPS 3L UPS.



Resilient



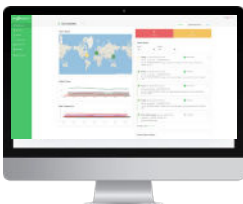
Secure



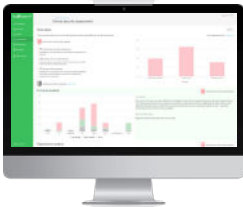
Sustainable

## Easy visibility

Monitoring and management software that streamlines data center device management:



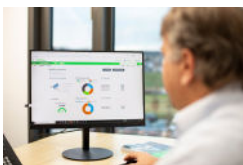
**EcoStruxure IT Expert** provides you a hands-on approach with cloud-based monitoring software that synthesizes and analyzes performance and alert data into proactive recommendations and enables wherever-you-go visibility from any device.



**EcoStruxure Data Center Expert** is a scalable end-to-end on-premise monitoring software that collects, organizes, and distributes critical device information, providing a comprehensive view of your company-wide multi-vendor physical infrastructure.

## 24/7 peace of mind

Digital services proactively monitor your critical devices:



**EcoStruxure Asset Advisor\*** for secure power and cooling provides you a hands-off approach with 24/7 remote monitoring service by the Schneider Electric Connected Services Hub experts.

We monitor and troubleshoot, you relax.

## Optimized operations

Planning and modeling software transforms data into performance insights:



**EcoStruxure IT Advisor** is a data center infrastructure planning and modeling solution that provides Data Center Managers in large enterprises and colocation data centers with full insights into their infrastructure to improve profitability, sustainability, and resiliency.

## Comprehensive on-site services

### Start-up service

- Commission the installation in accordance with manufacturer's recommendations. Ensure optimal system performance from Day 1.

### Schneider Electric-certified installation services

- Expert configuration of your equipment for optimal performance and reliability.

### Maintenance services

- Ensure proper care of your mission-critical applications.
- Preventive maintenance and response time upgrades, where available.

### Flexible service plans / on-site extended warranty

- Hassle-free system maintenance.
- Improve uptime at a predictable cost.

\*Contact your local representative for availability

# Technical specifications

Rated Power (kVA/kW)*	250 kVA/250 kW	300 kVA/300 kW	400 kVA/400 kW	500 kVA/500 kW	600 kVA/600 kW
<b>Input</b>					
Input voltage (V)	380/400/415 V (3-phase + Neutral + PE)				
Frequency (Hz)	40–70 Hz				
Input power factor	>0.99				
THDI	<3%				
Input voltage range	323–477V				
Dual mains input	Yes (default: single mains input)				
<b>Output</b>					
Parallel	Up to 5 UPSs for capacity (or 5 + 1 for redundancy)				
Nominal output voltage (V)	380/400/415 V				
Efficiency: Double conversion mode	Up to 96%				
ECO mode	99%				
Overload capacity in normal operation	150% for 1 minute, 125% for 10 minutes, 105% continuous				
Output voltage tolerance	+/-1%				
Load Power Factor compatibility	From 0.5 leading to 0.5 lagging				
<b>Communication and management</b>					
Communication interface	RS485, dry contacts, Ethernet (SNMP, Modbus, TCP/IP, BACnet)				
Control panel	7-inch touchscreen LCD, status, and display console				
<b>Weights and dimensions</b>					
UPS, unpackaged/dimensions (H × W × D)	1970 x 600 x 850 mm			1970 x 1000 x 850 mm	
UPS, unpackaged weight	425 kg	465 kg	560 kg	640 kg	720 kg
<b>Regulatory</b>					
Safety	IEC/EN 62040-1				
EMC	IEC/EN 62040-2				
Performance	IEC/EN 62040-3				
Marking	CE				
<b>Battery type</b>					
Battery type	VRLA				
Number of batteries	36–50				
Charging power in % of output power (selectable)	26%			24%	
<b>Environmental</b>					
Relative humidity	0 to 95% non-condensing				
Operating elevation	0 to 1500 m without derating				
Audible noise at 1m from unit	70db			72db	
Protection class	IP20 (IP31 with optional kit)				

\* kVA/kW at 30°C



Life Is On



To learn more about the Easy UPS 3-phase range, including Easy UPS 3S, Easy UPS 3M, and Easy UPS 3L uninterruptible power supplies, EcoStruxure IT cloud-based DCIM, and EcoStruxure Asset Advisor 24x7 Digital Monitoring Services, contact your Schneider Electric representative or visit [se.com/ups](https://se.com/ups).

**About Schneider Electric** At Schneider Electric, we believe access to energy and digital is a basic human right. We empower all to make the most of their energy and resources, ensuring Life Is On everywhere, for everyone, at every moment. We provide energy and automation digital solutions for efficiency and sustainability. We combine world-leading energy technologies, real-time automation, software and services into integrated solutions for Homes, Buildings, Data Centers, Infrastructure and Industries. We are committed to unleash the infinite possibilities of an open, global, innovative community that is passionate about our Meaningful Purpose, Inclusive and Empowered values.

Schneider Electric SE  
35 rue Joseph Monier  
92500 Rueil Malmaison – France  
[www.se.com](https://www.se.com)

©2023 Schneider Electric. All Rights Reserved. Life Is On Schneider Electric is a trademark and the property of Schneider Electric SE, its subsidiaries and affiliated companies. All other trademarks are the property of their respective owners.  
998-22744253